

HELLO! GEO WORLD

Sightseeing Inquiries

- Kagoshima Chuo Station Tourism Information Center ☎099-253-2500
- Kagoshima Chuo Station East Exit Tourism Information Center ... ☎099-253-2500
- Sakurajima Tourism Information Center / Sakurajima Concierge Center ... ☎099-293-4333
- Kagoshima City Tourism Exchange Center ☎099-298-5111
- Kagoshima City Sightseeing Information Center (Tenmonkan) ... ☎099-813-7604
- Kagoshima Sightseeing Guide Station ☎099-208-4701
- Tarumizu City Tourist Association ☎0994-32-8839
- Roadside Station Tarumizu "Yuttari-kan" ☎0994-34-2237
- Roadside Station Tarumizu Hamabira "Tarutarupark" ☎0994-45-5727
- Forest Station Tarumizu "Sarugajo Gorge" ☎0994-32-9601
- Aira City Tourism Association ☎0995-67-6052
- Aira Kamo Tourism Exchange Center ☎0995-52-0748

Public Transportation

- JR Kyushu Information Center ☎099-256-1585
☎050-3786-1717
- Nangoku Kotsu ☎099-255-2141
- Kagoshima Kotsu ☎099-247-2333
- Kagoshima Kotsu: Bound for Aira / Kagoshima City ☎099-254-8970
- Kagoshima Kotsu: Bound for Tarumizu ☎0994-65-2258
- JR Kyushu Bus: Kagoshima Branch ☎099-247-2057
- Kagoshima City Transportation Bureau: Kagoshima City Bus ... ☎099-257-2117
- Kagoshima City Transportation Bureau: Kagoshima City Tram ... ☎099-257-2116
- Ferry Sunflower ☎0120-3268-56
- Sakurajima Ferry ☎099-293-2525
- Tarumizu Ferry: Kamoike Port ☎099-256-1761
- Tarumizu Ferry: Tarumizu Port ☎0994-32-0001

Access to Kagoshima



Kagoshima Transportation

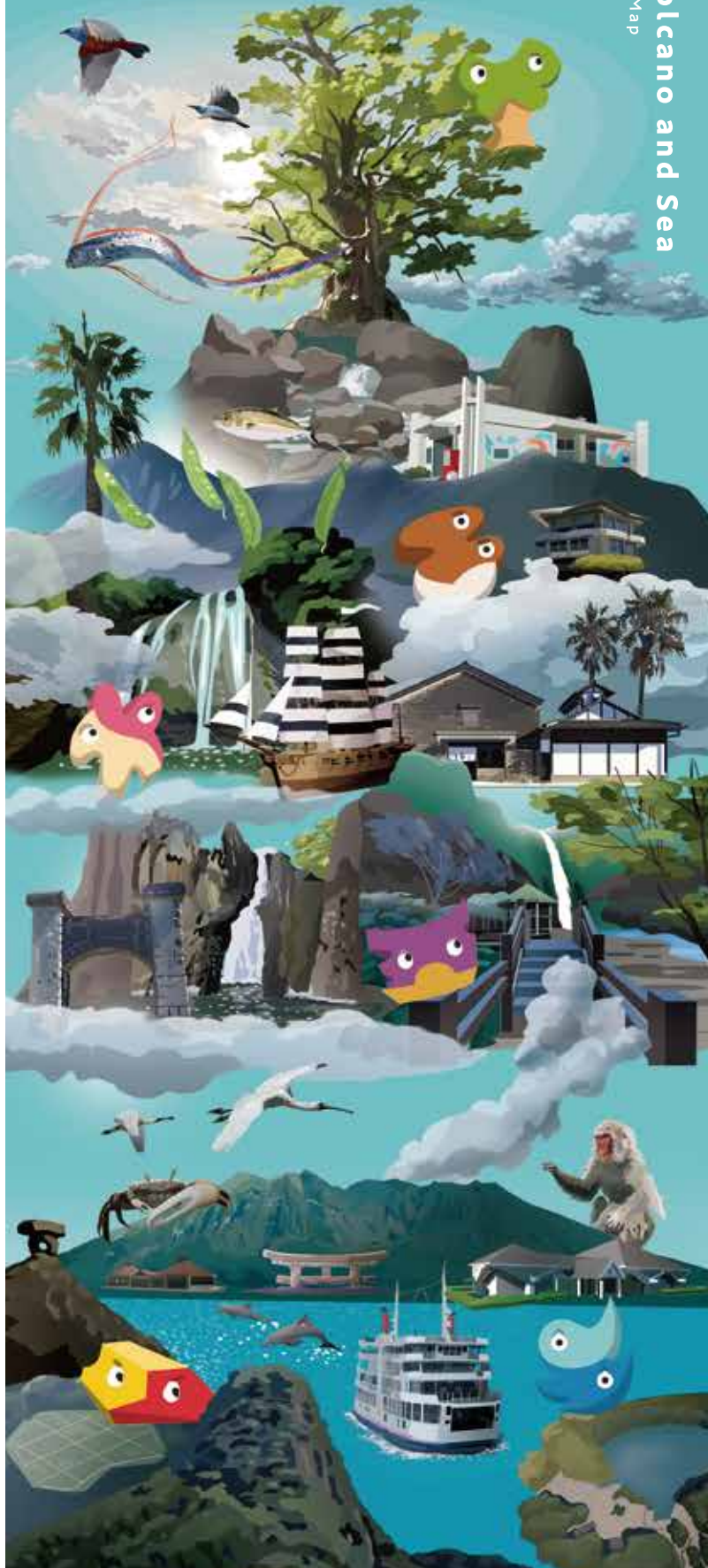


Contact

Sakurajima-Kinkowan Geopark Promotion Council Office

(Kagoshima City World Heritage and
Geotourism Promotion Division)
11-1 Yamashita-cho, Kagoshima-shi 892-8677
TEL: 099-216-1313 FAX: 099-216-1320

Sakurajima-Kinkowan Geopark (Official Site)
<https://www.sakurajima-kinkowan-geo.jp/>



Deep Dive Activities

Program [Reservation is required in advance]

*Please confirm the availability, fees, and other details in advance.
(As of March 2023)



Guided Tour of Sakurajima with a Volcanologist

Explore Sakurajima with a volcanologist on a bus tour, allowing you to delve into deeper what you want to know about Sakurajima. A customized tour is also available besides the standard tour.

- Period: Please inquire in advance. (Schedule adjustment is possible for reservations that are made 2 months in advance.)
- Duration: 2 hours (Available between 9:00 and 17:00 / Extension is available upon request.)
- Capacity: 1 to 40 people (Only one bus is available. Vehicle arrangements are not provided.)
- Fee: 55,000 JPY (included tax) (When accompanied by one volcanologist)
- For inquiries: NPO Sakurajima Museum ☎099-245-2550

Canioning

Travel down along the clear stream through Sarugajo Gorge. Calm your body while taking in the water and surrounding greenery.



- Period: July to September
- Duration: 2 hours
- Capacity: 2 to 40 people
- Fees: 6,500 JPY (12 years old or older; junior high school and above), 6,000 JPY (9 years old or older; 4th grade elementary school and above)
- For inquiries: Mori-no Eki Tarumizu "Sarugajo Gorge" ☎080-9248-1903

Shower Climbing

Travel upstream through Sarugajo Gorge, selected as one of the top 100 sceneries of Kagoshima. It's a fun adventure through the water and atop white massive rocks.

- Period: All year round
- Duration: 2 hours
- Capacity: 4 to 40 people
- Fee: 4,500 JPY (6 years old or older; elementary school and above)
- For inquiries: Mori-no Eki Tarumizu "Sarugajo Gorge" ☎080-9248-1903



Pottery Experience

Try pottery-making and art experience that use volcanic ash as an ingredient. These make a great souvenir to remind you of your trip.

- Period: All year round
- Duration: 30 minutes to 2 hours
- Fees: Starting from 1,650 JPY/person ([Murayama Tougei] Pottery experience, [Ougaku Tougei] Pottery painting experience, and volcanic ash art experience)
- For inquiries: [Murayama Tougei] ☎099-293-2322 [Ougaku Tougei] ☎099-293-3939

Reservation required at least 7 days prior

Dyeing Experience with Sakurajima Volcanic Ash

Dye tenugui (Japanese hand towels) using dye made from Sakurajima's volcanic ash. Take home your own-colored tenugui from Sakurajima.

- Period: All year round
- Duration: 30 minutes
- Location: Around Sakurajima Visitor Center (Please confirm at the time of reservation.)
- Capacity: 2 to 5 people
- Fee: 2,500 JPY/person
- For inquiries: Gentoo Penguin Sakurajima Kobo ☎070-5507-8935



Travel Guide for a Trip around Sakurajima

A guide map with short videos "The secrets of the volcanic island." It can enhance your cycling or driving trip. The colorful paintings of Sakurajima must be a great souvenir!

- Period: All year round
- Location: Sakurajima Visitor Center
- Price: 1,000 JPY
- For inquiries: Sakurajima Visitor Center ☎099-293-2443



Natural Hot Spring Digging Set; Let's make your own footbath!

Make your own private footbath by digging along Arimura Beach of Sakurajima, where hot spring water gushes out. No reservation is required. The hot spring digging set is available for purchase.

- Period: All year round (The dates and times are limited due to the weather and tide. Please inquire in advance.)
- Location: Arimura Beach
- Price: 1,100 JPY (The set includes: 2 shovels, 1 original towel, and guidebook for digging hot springs.)
- For inquiries: Sakurajima Visitor Center ☎099-293-2443

A must see!

Sakurajima-Kinkowan Geopark
~ connections between the volcano, people, and nature ~



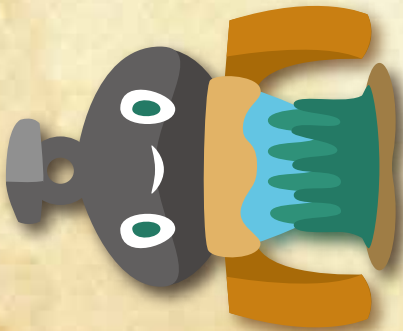
SAKURAJIMA-KINKOWAN GEO PARK

A geopark is a "park of the land." In other words, a place to enjoy as you'd like where the earth becomes a field and tells a story of the connection between the land and humans of the past, present, and future. Many natural attractions that have formed over tens of thousands of years including mountains, the deep blue sea, and large forests lie right in front of your eyes. At Sakurajima-Kinkowan Geopark, there are many ways to experience the impressive nature, tours, events, activities, and special products. Sakurajima-Kinkowan Geopark is a stage where you can both learn and play to your heart's content.



Certified Japanese Geopark

Discover "geo treasures" hidden throughout Aira, Kagoshima, and Tarumizu!

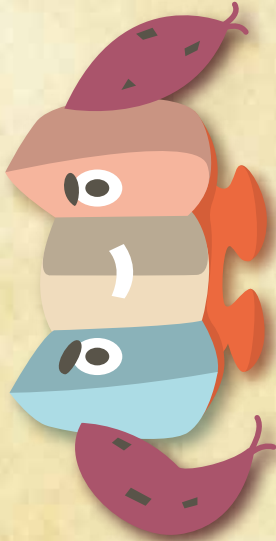


Nickname: Momaar

AIRA

Aira is a treasure box of geographical and topographic features, including Lake Sumiyoshi, the explosion crater of the Yonemaru Maar, Ryumon Falls, the ebb tides of Shigetomi Beach, and more. The Aira Caldera is a place with deep connections to the name of Kinko Bay.

Aira City Tourism Association Website <https://aira-kankou.jp/>

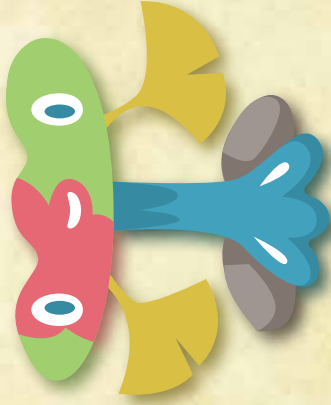


Nickname: Tarock

KAGOSHIMA

A representation of the three calderas formed from massive eruptions and ignimbrite rock that came from them. By carefully using this rock, stone culture of Kagoshima was developed. It's used in the World Cultural Heritage sites and objects, as well.

Kagoshima City Tourism Guide <https://www.kagoshima-yokanavi.jp/>



Nickname: Rumity

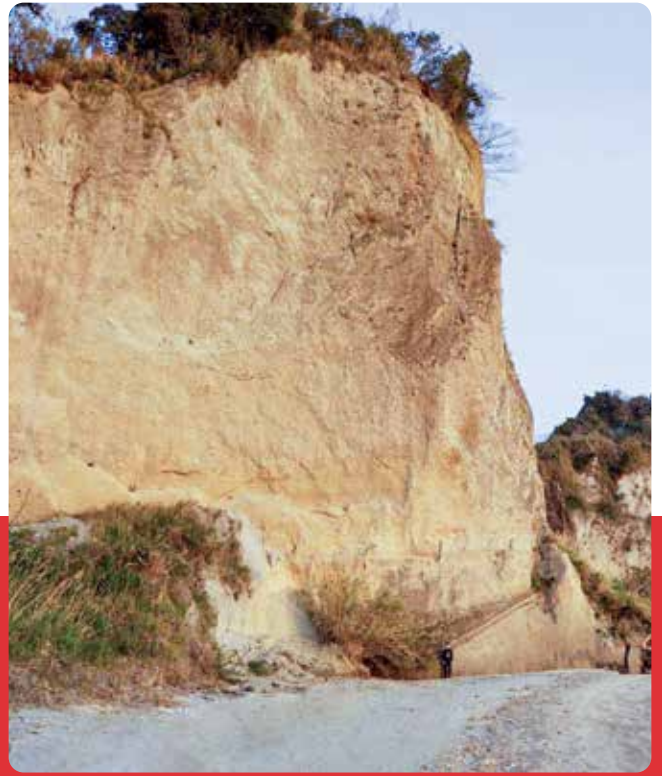
TARUMIZU

If you are looking for activities to enjoy the geography and geology, then Tarumizu is the place to go. Enjoy canyoning in Sarugajo Gorge as well as SUP and canoeing in the grand Kinko Bay.

Tarumizu City Hall <https://www.city.tarumizu.lg.jp/>

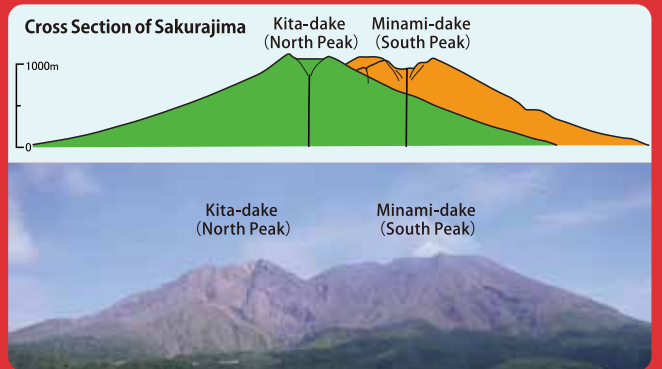


[koi-suru Tarumizu]



The shirasu tablelands were not ash from Sakurajima.

It is often mistaken that the shirasu tableland was formed from the volcanic ash of Sakurajima piling up over tens of thousands of years. However, it was actually created in one week during the large eruption of the Aira Caldera. In Tarumizu, you can observe the strata layers and the spectacular shirasu.



Sakurajima has 2 peaks

Sakurajima appears to be one mountain, but it consists of two volcanos. The North Peak (Kita-dake) is older and created Sakurajima 26,000 years ago. It continued to be active until about 5,000 years ago. After that, about 4,500 years ago, the volcano shifted slightly south resulting in the South Peak (Minami-dake) which is still active today. Those two peaks, running north and south, make up Sakurajima. This is why the shape and size of Sakurajima can change so much depending if you are viewing it from Aira City, Kagoshima City, Tarumizu City, or somewhere else. Discover various views of Sakurajima to find your favorite.

Must see sites of Sakurajima and Kinko Bay

Takakura Observatory (Aira city)

At an elevation of 125m, this observation point offers a breathtaking view of Aira, Kinko Bay, and Sakurajima all together. At night time, the skyline of Aira is also beautiful.



Roadside Station Tarumizu "Yuttari-kan" (Tarumizu city)

You can enjoy the great view of sakurajima close at hand and calm waves of Kinko Bay while relaxing with a footbath. This is a place to slow things down and enjoying the hot spring and restaurant of this roadside station.



Connection with Nature

Observe the life force of the flora! Sakurajima is a natural museum.

Plant life can't possibly survive the harsh environment of a volcano! Wrong! Close to the craters, you can find Japanese pampas grass and knotweed. A little further away, Eurya Japonica and Alnus Firma, a type of alder, are growing strongly. Even further away, Japanese black pines and Red Machilus, a type of laurel, grows well. With each large eruption, the land becomes covered in lava, turning it to rock, but that is just a new beginning in the lifecycle of the foliage. First, moss and lichen start to grow on the rocks, creating a foundation for grassland. Sun trees such as Japanese black pines and shade trees such as laurels start to grow and over many years become a forest. The scenery of Sakurajima has lava from many different eruptions which offers views of different stages of the forest creation process. It truly is a natural museum.

There is plant life even near the crater



Plant life on the Showa and Taisho lava grounds are still quite young and scattered, but take a look at the An-ei and Bunmei lava grounds and you will find full lush forests.

Three Generations of Plant Life!



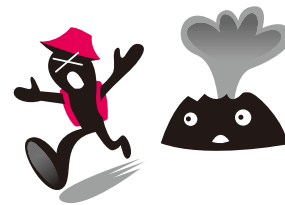
The Arimura coast offers three generations of lava with the An-ei (1779), Taisho (1914), and Showa (1946) lava. See for yourself the variation of the old lava covered in trees and the newer lava with Japanese black pines growing from the rock surfaces.

The more you know, the more fun you have! Rules of Sakurajima

The residents of Sakurajima and Kagoshima follow these unspoken rules. For first time visitors to Kagoshima, as well as repeat visitors, knowing these rules will make your time in the Sakurajima-Kinkowan Geopark more enjoyable and comfortable.

[No.1] If there is an eruption, don't run away in a panic

Sakurajima generally erupts every day, but it's not a problem and you can go sightseeing normally. Even if it erupts hundreds of times a year, you can understand it simply by seeing the people who live their normal lives at the foot of the volcano. Entrance is prohibited within 2km of the crater, but all of the sightseeing facilities are located at least 2.5km away, so you can enjoy them worry-free.



[No.2] Don't get startled if ash starts falling



Volcanic ash is less than 2mm in size, so even if it falls on you, it won't hurt at all. However, for people that wear contact lenses, it can be painful if ash gets in your eyes, so please be careful. In all of the research and surveys done up to now, there appears to be no direct health effects from the ashfall, so don't worry, even if some gets in your mouth.

[No.3] If you like to stay clean, you should hide from the ash

When ash falls onto their clothes, the people of Kagoshima simply brush it off with their hands. However, if you are worried about your clothes getting dirty, you should take a break in an undercover area. If you don't mind possibly getting a little dirty, there is no problem continuing on as you were. When ash falls after an eruption, it generally lasts for a couple minutes up to around 10 minutes, 20 minutes or so at max. Therefore, spending the time under cover, indoors, or in a car is recommended.



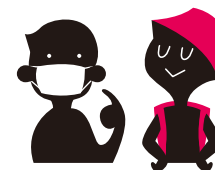
[No.4] Take caution when driving during heavy ash fall



If ash starts to fall while you are driving, treat it the same as rain and slow your speed or pull over and wait for it to stop. However, the location that the ash is falling is usually a small area, so it could be better to simply keep moving to avoid the ashfall completely.

[No.5] Don't be surprised if you see people without masks during ash fall

When ash starts to fall, if you want to protect your mouth and nose, you can wear a mask, but you won't find any locals that wear masks for the purpose of protection against ash.



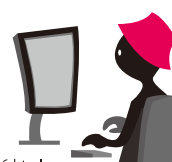
[No.6] Don't be too worried that there may be a large eruption



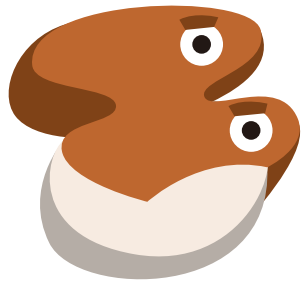
Before a large-scale eruption, such as the Taisho eruption in 1914, there are many signs that occur months in advance, such as plate movement and seismic activity. You don't have to be worried about it too much. For example, there were signs such as the level of well water decreasing and earthquakes before the Taisho eruption.

[No.7] If you are still worried, please take a look at the Meteorological Agency website or contact them

If a large eruption that requires evacuation is predicted, the eruption security level will be raised in advance to level 4 (prepare for evacuation) and level 5 (evacuate now). If you'd like to know more about the current condition of Sakurajima, make an inquiry to the Meteorological Agency or check out their website.



https://www.data.jma.go.jp/svd/vois/data/tokyo/STOCK/activity_info/506.html



Connection with Industry

An island of treasure blessed with the volcano and the sea

Sakurajima boasts many treasures that are only possible with the benefits of the volcano and the sea. For example, Sakurajima komikan are grown on sunny mountain slopes, taking advantage of the well-drained soil also utilizing the reflected light off of Kinko Bay. Others include ceramics made with volcanic ash, fish dried with ash, glassware and cosmetics made with shirasu, lava plates for cooking, and more. Don't forget about Kagoshima City being the Number 1 prefecture capital for hot springs. The people of Kagoshima are strong minded for taking the ash, something that is usually hated, and turning it into a resource.

Changing something usually hated into a resource!



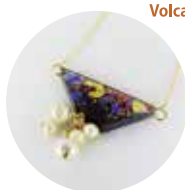
The foundation for the grass of the city trams is actually made from shirasu, a material formed during volcanic eruptions. As a resource, it has great water retainability and permeability for the grass to grow strong.

Delicacies and Beauty items Made from Volcanic Ash!



Sakurajima Haiboshi Bento

Haiboshi is a technique to use a process where fish are dried out using volcanic ash, which removes the odor from the fish. This process which brings out a true umami flavor of an aged fish is why the meals are so popular. You can find these bento lunchboxes at Kagoshima Chuo Station, Kagoshima Airport, and other locations.

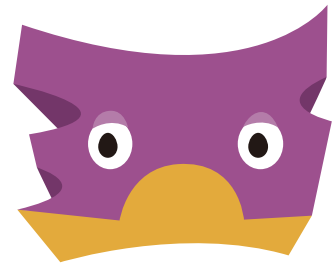


Volcanic Ash Jewelry, Tephra

These fashionable accessories made with volcanic ash are created using the concept of, "jewels that have fallen from the Kagoshima sky."

Canned Ash, "Hai, Dozo!!"

Ingredients: fallen ash from Sakurajima, Tarumizu City residents' agony
Volume: 100cc of unthankful blessings from the sky



Connection with History and Culture

People have lived alongside the volcano since the Jomon Period (14,000–300 BCE)

The history of Kagoshima can't be talked about without mentioning volcanos. There are trace remains of shell middens found on Sakurajima that prove people lived together with the volcano as far back as the Jomon Period (14,000-300 BCE). Those were covered with debris flows, but even then, people continued to live on Sakurajima. It could be that the benefits outweigh the risks. The stone culture in Kagoshima is also thanks to volcanos. The welded "tuff" ejected by eruptious is not so "tough" compared to other stones, so it is easier to process it. resulting in it being easier to process. Many of the historic buildings in Kagoshima, such as the stone bridges and the World Heritage sites of the Shuseikan Museum, Terayama Charcoal Kiln Remains, and Sekiyoshi Sluice, are made with ignimbrite rock.

The castle of Satsuma stood on shirasu tableland.



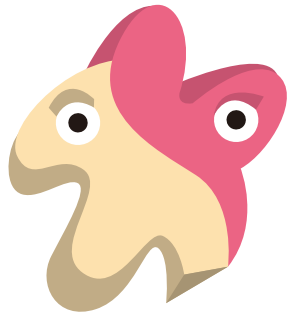
Kagoshima Castle, where the Shimadzu clan lived as the feudal lord of Satsuma, was composed of the mountain fortress on the shirasu tableland and buildings at the foot of the hill.

Japan Heritage Walk through a Fumoto, historic neighborhoods once traversed by Satsuma samurai



There are many historic samurai areas, including the site of the main castle (Tsurumaru Castle) and branch castles called "Fumoto" under the defence network throughout Kagoshima. Fumoto were built in defensibly strategic locations with rock walls between the entryways which provided the function as a castle. Stone culture grew stronger through the use of ignimbrite rock in the rock walls and stone warehouses of fumoto neighborhoods.

There are some fumoto that are located within the Sakurajima-Kinkowan Geopark including Tarumizu Fumoto and Kamo Fumoto.



Connection with People

Coexisting with an active volcano!

People have always lived with the active volcano, Sakurajima. The An-ei eruption of 1779 made the residents of the Kurokami area to relocate to high land in Kagoshima City. In Tarumizu, there are also places that were developed by refugees of the Taisho Eruption of 1914 who moved after the eruption devastated their homes. The deep feelings towards Sakurajima of these people can be felt.

Ash services of Kagoshima!



These yellow bags are special garbage bags for collecting volcanic ash.

Some functions for coexisting with an active volcano include road sweepers, volcanic ash collecting stations, ashfall weather reports, eruption alerts, and more.

Disaster Remains

~Experience the frightfulness of the Taisho Eruption~

Remains of the destruction from the Taisho Eruption of 1914 can be seen throughout Sakurajima-Kinkowan Geopark, including the buried shrine gates of Kurokami and Ushine Fumoto, which were buried 2m in one day, as well as many monuments dedicated to the conditions of the structures effected by the disaster. It is a place to learn the history of the people that lived together with an active volcano.



Kurokami Buried Shrine Gate



Ushine Fumoto Buried Shrine Gate



Sakurajima Eruptions Monument (Sakurajima)



Sakurajima Eruptions Monument (Aira)



Connection with the Sea

A deep sea full of mysteries created by a volcano!

Kinko Bay, created by a volcano, is full of mysteries! With depths of over 200m, it was created from a hollowed-out volcano which erupted 29,000 years ago. Located on the sea floor of the north end of Kinko Bay within the Aira Caldera is another smaller caldera called the Wakamiko Caldera. Here, volcanic gas seeps through the sea floor and rises to the surface. These gas bubbles are called, "tagiri." There are rocky coastlines, rock reefs, and coral, as well as marine forests, ebb tides, deep sea depths, and much more making it a diverse environment for an abundance of sea life. Within the bay, you can find dolphins, over 1,000 species of fish, and a rare species of tube worms called Satsuma Haorimushi. In addition, you can also find hydrothermal vents and rare metals, as well.

Are the dolphins of Kinko Bay gluttons!?



Dolphins have cute faces and dolphins require a large amount of food. Seeing them jump around Kinko Bay is proof it is abundant in sea life.

Meaning of Kinko Bay



Literally meaning, "Inlet of decorative shuttle-woven fabric," The name was given by the first Daimyo (feudal lord), Shimadzu Iehisa of the Satsuma domain, present day Kagoshima. He originally thought it to be only the Aira Caldera part seen from Kurokawa Cape in Aira, but eventually, all of Kagoshima Bay became known as Kinko Bay.

Taste the Blessings of Kinko Bay

The amberjack and yellowtail of the bay are fatty and the deep-sea shrimp are tender and sweet. Please enjoy the delicious tastes that can only be found in Kinko Bay.



Umi-no-oukan

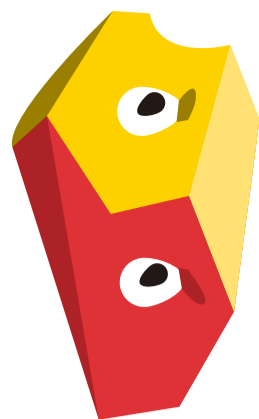
643-14 Kaigata, Tarumizu city ☎0994-32-0321
11:00 ~ 14:00 Tuesdays and New Year's Holiday

Roadside Station Tarumizu "Yuttari-kan" Restaurant

1038-1 Ushinefumoto, Tarumizu city ☎0994-34-2237
11:00 ~ 15:00 No holidays

Roadside Station Tarumizu Hamabira "Tarutarupark" Restaurant (Farm to Table TARUMIZU)

2036-6 Hamabira, Tarumizu city ☎0994-32-1155
Mon. ~ Fri.: 11:00 ~ 19:00, weekends and holidays: 11:00 ~ 20:00
no scheduled holidays



Connection with Topography and Geology

The Land of Kagoshima was Formed by a Massive Volcanic Eruption!

About 29,000 years ago, there was a massive eruption estimated to be a million times stronger than the daily eruptions we see from Sakurajima today. The total amount of magma covered across all of Kagoshima with the thickness over 60m (about 200 ft). This eruption formed the Aira Caldera, located in the back end of what is currently Kinko Bay. At this time, pyroclastic flow composed of lava rock, volcanic ash, and volcanic gas mixing together at more than 600°C spread across the land of Kagoshima. Within a week, all the mountains and valleys had been filled resulting in very flat land. The shirasu tableland in Kagoshima was left after rivers cut through some parts of the flatland. After that, an eruption on the south side of the Aira Caldera around 26,000 years ago created the North Peak. Eventually, another eruption created the South Peak. This was the creation of Sakurajima, a double volcano mountain. The land of Kagoshima that we stand on today, as well as Sakurajima and Kinko Bay which extend before our eyes, are all connected to the massive eruptions long ago.



Kinko Bay is a Caldera

Kinko Bay was created from large eruptions that followed out the land below the surface. Did you know that volcanoes are not only mountains, but can also be large hollows in the ground known as a caldera?

A spot to experience the energy of the volcano!



Looking down at Kinko Bay from the observation deck in Terayama Park, you can see that it is a sunken hole, showing that it is a caldera. You can feel the power of the volcano while gazing out at the beautiful scenery of Sakurajima.

Check out the mountain surface of Sakurajima!



The mountain surface of the older North Peak has been carved away and is rough, while the South Peak is still smooth. Around the Showa Crater (east side of South Peak) is covered in new volcanic material creating a very smooth surface.



Depart on an Adventure of a Volcano and the Sea!

An adventure around Sakurajima-Kinkowan Geopark will take you to many activities throughout Aira city, Kagoshima city, Tarumizu city. See the beautiful sites sightseeing locations of the volcano and the sea while feeling a deep interest of the world through the connection of people's lives with the Earth and history. It's time to set out on your own adventure with this trusty handbook to guide you.

SAKURAJIMA-KINKOWAN GEO PARK GUIDE MAP

