

SAKURAJIMA AREA MAP

English

How can I get to the Geopark



Tourist Information

- Kagoshima City Tourist Information Center (Tenmonkan) ☎099-813-7604
- Sakurajima Tourist Information Center / Sakurajima Concierge Center ☎099-293-4333
- Tourism Exchange Center ☎099-298-5111
- Sakurajima Ferry (Kagoshima City, Shipping Dept.) ☎099-293-2525
- Kagoshima Chuo Station Tourist Information Center ☎099-253-2500
- Kagoshima Chuo Station East Exit Tourist Information ☎099-253-2500
- Kagoshima Sightseeing Guide Station ☎099-208-4701
- Kagoshima City General Information Call Center "Sun Sun Call Kagoshima" ☎099-808-3333

Transportation in Sakurajima

- Local Bus
 - Sakurajima Island View Bus
 - Kagoshima City Bus: Line 60 (Bound for Sakurajima Hospital, Higashi Shirahama)
 - Kagoshima City Bus: Line 70 (Higashi Shirahama to Kurokamiguchi)
 - ※For Buried Shrine Gate in Kurokami
 - Kagoshima City Transportation Sakurajima Office ☎099-293-4220
 - Kagoshima Kotsu (bound for Sakurajima guchi / Tarumizu port ... ☎0994-65-2528
- Taxi (in front of Sakurajima port) ☎099-293-2489
- Car, Motorcycle, Bicycle Rental (in front of Sakurajima port) ☎099-293-2162

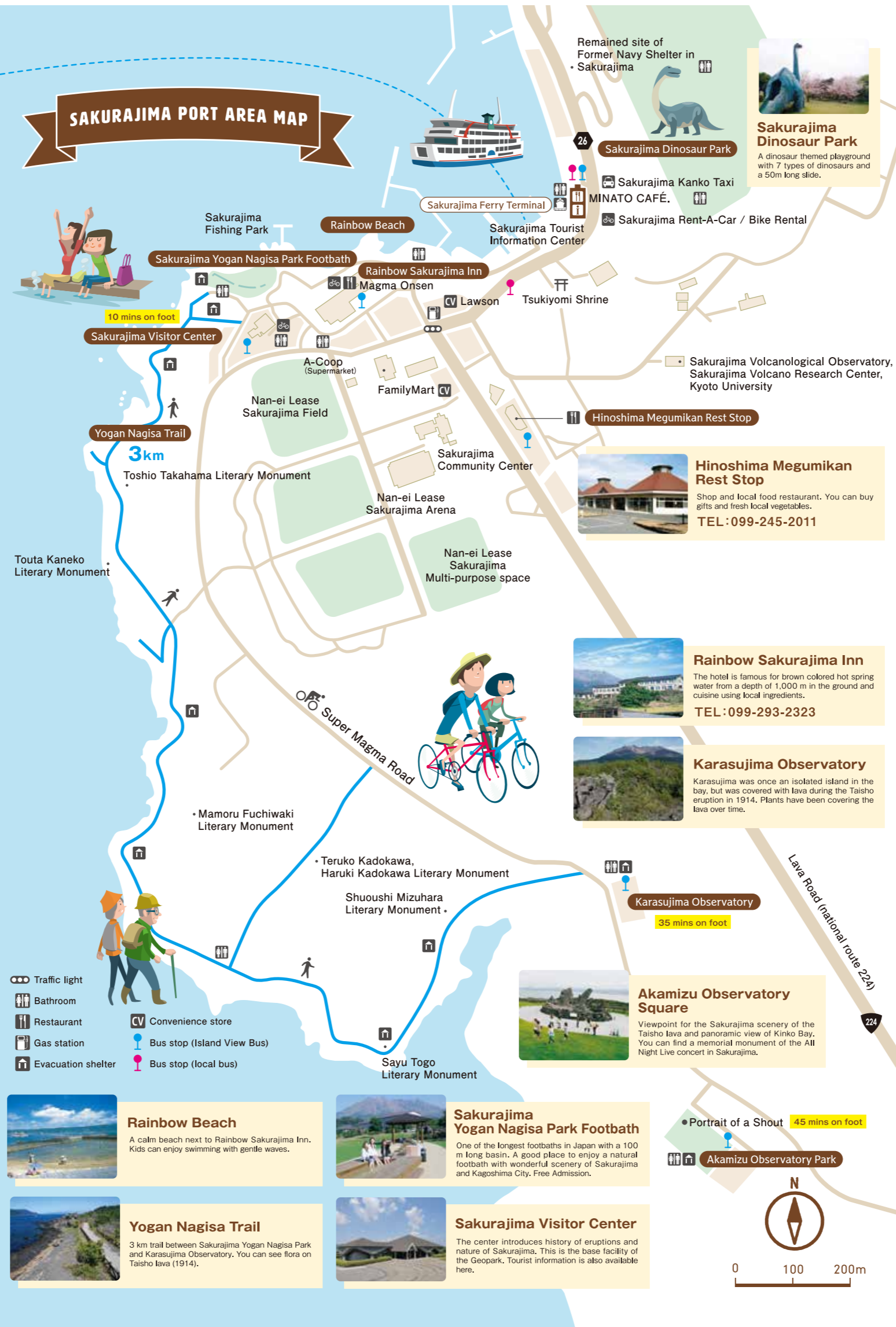
Accommodations

- Rainbow Sakurajima Inn ☎099-293-2323
- Sakurajima Hotel ☎099-221-2311
- Sakurajima Seaside Hotel ☎099-221-2121

[Contact Information]

Sakurajima-Kinkowan Geopark Promotion Council Office
(World Heritage · Geopark · Green tourism Promotion Division)

11-1 Yamashita-cho, Kagoshima City 892-8677
TEL: 099-216-1313 FAX: 099-216-1320



What you can find in Sakurajima-Kinkowan Geopark



Geopark is a "park of the Earth". The earth is like a big park where you can enjoy the stories of relationship between the Earth and human beings from the past to the future! Including mountains, oceans and forests, there are many natural attractions that have been created over millions of years.

There are many ways to enjoy Sakurajima-Kinkowan Geopark. You can enjoy the incredible scenery, tours, events, activities, and local products. Let's discover the wonders of Sakurajima and Kinko-Bay!

Sakurajima Ferry Contact Information

Sakurajima Ferry
☎099-293-2525

website →



Sakurajima Island View Bus Time Schedule

(55 mins round trip. Bus Depart From Sakurajima port every 30 mins)

Bus Stops	Departure														
	9:30	10:00	10:30	11:00	11:30	12:00	12:30	13:00	13:30	14:00	14:30	15:00	15:30	16:00	16:30
Sakurajima Port	9:30	10:00	10:30	11:00	11:30	12:00	12:30	13:00	13:30	14:00	14:30	15:00	15:30	16:00	16:30
Hinoshima Megumikan Rest Stop	9:31	10:01	10:31	11:01	11:31	12:01	12:31	13:01	13:31	14:01	14:31	15:01	15:31	16:01	16:31
Rainbow Sakurajima Inn	9:33	10:03	10:33	11:03	11:33	12:03	12:33	13:03	13:33	14:03	14:33	15:03	15:33	16:03	16:33
Sakurajima Visitor Center	9:36	10:06	10:36	11:06	11:36	12:06	12:36	13:06	13:36	14:06	14:36	15:06	15:36	16:06	16:36
Karasujima Observatory	9:39	10:09	10:39	11:09	11:39	12:09	12:39	13:09	13:39	14:09	14:39	15:09	15:39	16:09	16:39
Akamizu Observatory Square	9:41	10:11	10:41	11:11	11:41	12:11	12:41	13:11	13:41	14:11	14:41	15:11	15:41	16:11	16:41
Akamizu Fumoto	9:44	10:14	10:44	11:14	11:44	12:14	12:44	13:14	13:44	14:14	14:44	15:14	15:44	16:14	16:44
Sakurajima International Volcanic Sabo Center	9:47	10:17	10:47	11:17	11:47	12:17	12:47	13:17	13:47	14:17	14:47	15:17	15:47	16:17	16:47
Akamizu Fumoto	9:50	10:20	10:50	11:20	11:50	12:20	12:50	13:20	13:50	14:20	14:50	15:20	15:50	16:20	16:50
Akamizu Yunohiraguchi	9:51	10:14	10:51	11:14	11:51	12:14	12:51	13:14	13:51	14:14	14:51	15:14	15:51	16:14	16:51
Yunohira Observatory	10:10	10:40	11:10	11:40	12:10	12:40	13:10	13:40	14:10	14:40	15:10	15:40	16:10	16:40	17:10
Ouahu Elementary School	10:20	10:50	11:20	11:50	12:20	12:50	13:20	13:50	14:20	14:50	15:20	15:50	16:20	16:50	17:20
Sakurajima Port	10:25	10:55	11:25	11:55	12:25	12:55	13:25	13:55	14:25	14:55	15:25	15:55	16:25	16:55	17:25

Contact Sakurajima Island View Bus ※Pay your fare when you get off the bus.

- Kagoshima City Bus Management Division ☎099-257-2117
- Kagoshima City Transportation Sakurajima Office ☎099-293-4220

	Fare	One-day pass
Adult	230 yen	500 yen
Child	120 yen	250 yen

Rent-a-cycle

Shops	Sakurajima Rent-A-car	Rainbow Sakurajima Inn	Sakurajima Visitors Ceter
Types of Rent-a-cycle	 City Cycle easy to ride and safe	 e-bike electric sports bike	 Cross Bike combines speed and stability
Inquiries	☎099-293-2162	☎099-293-2323	☎099-293-2443

※Fares and schedules are as of November 2023 and subject to change.

Sakurajima Island Map

36 km around Sakurajima

1 hour by car 4 hours by bicycle 9 hours on foot



13 Shirahama Port

One of the popular fishing spots. You can enjoy the volcano in a beautiful triangle shape from here. As the shape is quite different from the iconic one you see from the city center of Kagoshima, even some locals may not recognize it as Sakurajima.



10 Uranomae Port

At this port, you can see Shinjima Island created by sea floor elevation during an eruption in the Edo period. A liner ship to the island departs from here.



Insights of Evacuation Port

Small or big in scale, Sakurajima erupts almost everyday. Meanwhile approx. 3,500 residents live their "normal" life at the foot of the volcano. Evacuation ports are built for them as a preparation against a large eruption that can occur once in a hundred or thousand years. So far, fortunately, these ports have never been used for evacuation purposes. Each and every evacuation port has its unique scenery. Find the wonderful points of each port for a unique experience.



4 Yuno Port

The combination of the stone walls, port and trees creates a special type of beauty. It is a great place to take a stroll. You can also see how people live on the volcano here.



8 Shioyagamoto Port

See the mystic emerald green color of the sea surface made from the hot spring gushing out from the sea floor. The level of vegetation varies because the lavas on either side of the port are from different periods.

Highlights!



A Sakurajima Visitor Center

As the base facility of the geopark, the center introduces the history of volcanic activity and nature of Sakurajima. Tourist information is also available here.
 ■ 10 mins on foot from Sakurajima Port TEL: 099-293-2443
 Free Admission Open everyday 9:00 - 17:00 Parking for 10 cars



B Tsukiyomi Shrine

This is the largest shrine on Sakurajima. It faces inland (towards the volcano). It was buried under lava flow during the Taisho Eruption (1914), and rebuilt at the current location in 1940.
 ■ 2 mins on foot from Sakurajima Port TEL: 099-293-2109
 Parking for 20 cars



C Yogan Nagisa Trail

3 km-long trail between Sakurajima Yogan Nagisa Park and Karasujima Observatory shows you flora on the Taisho lava (1914).
 ■ 10 mins on foot from Sakurajima Port
 TEL: 099-298-5111 (Tourism Exchange Center)
 Parking for 20 cars Free Admission



D Karasujima Observatory

Karasujima, once an isolated island in the bay, was covered with lava during the Taisho Eruption (1914). Flora has rebounded on the barren lava field since then.
 ■ 35 mins on foot or 4 mins by car from Sakurajima Port
 TEL: 099-298-5111 (Tourism Exchange Center)
 Parking for 20 cars Free Admission



E Yonohira Observatory

The observatory is situated at the highest point on Sakurajima that the general public can access (4th station: 373 m on North Peak). Enjoy the overwhelming view.
 ■ 15 mins by car from Sakurajima Port TEL: 099-298-5111 (Tourism Exchange Center) Free Admission Open everyday 9:00 - 17:00 Parking for 30 cars



F Sakurajima Komikan Field

"Sakurajima Komikan" is a unique satsuma orange in its small size and strong sweetness. It's a blessing from the volcanic alluvial fan created by debris flow. Soil with good drainage makes the satsuma tasty.
 Harvest season : December - January



G Sakurajima Daikon Radish Field

Sakurajima Daikon has a Guinness World Record for the heaviest radish. They grow even in harsh fields with pumice from volcanic eruptions.
 Harvest season : January - February



H Tagiri (volcanic hydrothermal activity)

Local fishermen call this phenomenon "Tagiri". It is a unique spot to see bubbles from a submarine volcano rise to the sea surface.



I Shinjima island

The island was formed by the uplifted seafloor during the An-ei Eruption, while other islands around were formed by lava flowing from the ground. Some contain layers of shell fossils from 5,000 years ago.



J Kurokami View Spot

The observatory is a good view spot to see the Showa lava and Showa crater.
 ■ 30 mins by car from Sakurajima port / No parking



K Buried Shrine Gate in Kurokami

The torii gate was buried two meters in just one day during the Taisho eruption. The shrine is located in the back, and the surrounding forest is the oldest forest in Sakurajima. The ecology of the chinquapin trees, which were buried in the eruption but have come back to life, is unique.
 ■ 30 mins by car from Sakurajima port
 TEL: 099-298-5111 (Tourism Exchange Center) Parking for 7 cars



L Sakurajimaguchi

Lava flow connected the island and the mainland during the Taisho eruption (1914). You can distinguish the flora on Osumi Peninsula and the lava-covered area. Seto Village, buried under the lava, was the place where the first Japanese western-style battleship, the Shohai Maru, was built at the end of Edo period.
 ■ 20 mins by car from Sakurajima port / Parking is available



M Arimura Lava Observatory

Good place to view the Taisho and Showa lava. Check out distinct flora on them. There is geopark exhibition in the rest house, as well.
 ■ 20 mins by car from Sakurajima port
 TEL: 099-298-5111 (Tourism Exchange Center) Parking for 15 cars



N Eruption Memorial at Higashisakurajima Elementary School

This memorial (a.k.a. the monument of distrust of science) tells us the precursors and destruction caused by the Taisho Eruption, and the precautions for an upcoming eruption. The words "Do not rely on scientific theory..." made this monument famous in Japan.
 ■ 10 mins by car from Sakurajima port / No parking



Interactions related to [Geography/Geology Nature Sea Industry History/Culture People]